

MONTHLY MEMBERSHIP PROGRESS REPORT

District 42

Results as of: 5/31/2026

GMT:

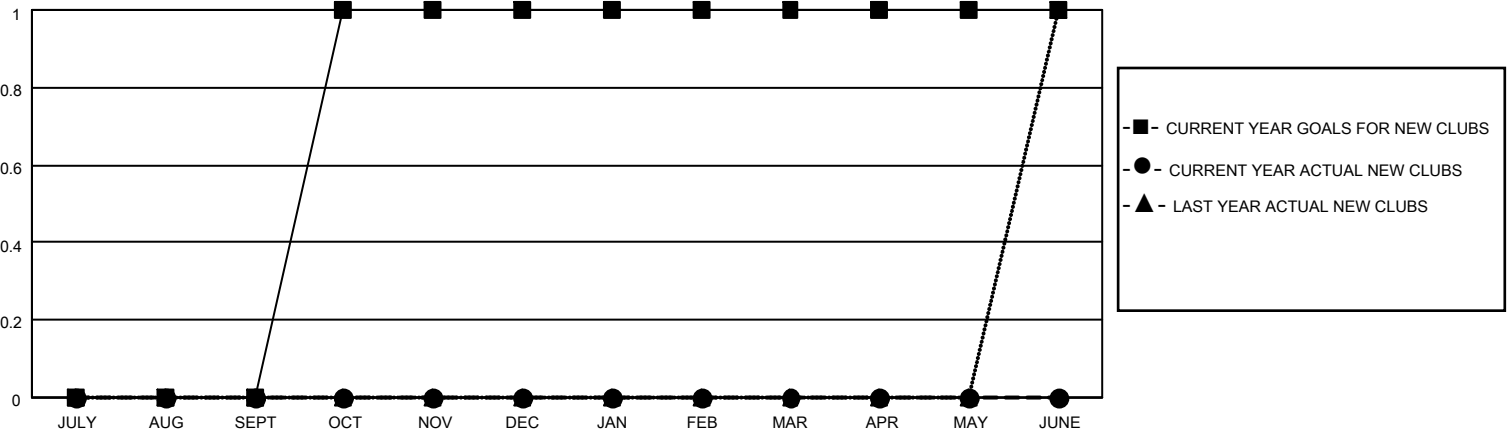
LOCATION RHODE ISLAND

GMT CA

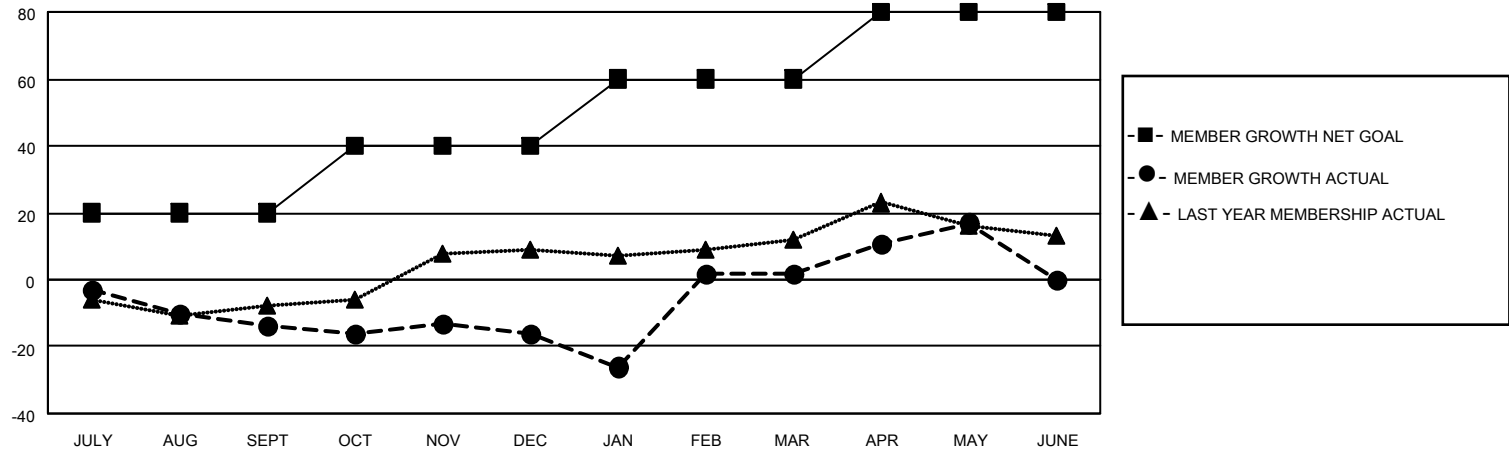
Clubs			
RESULTS FOR 2025-2026			
QUARTER	NEW CLUB GOAL	NEW CLUBS	DROPPED CLUBS
JULY/AUG/SEPT	0	0	0
OCT/NOV/DEC	1	0	0
JAN/FEB/MAR	0	0	0
APR/MAY/JUNE	0	0	0

Members			
RESULTS FOR 2025-2026			
QUARTER	MEMBER GROWTH NET GOAL	MEMBER GROWTH ACTUAL	DROPPED MEMBERS ACTUAL (including transfers)
JULY/AUG/SEPT	20	13	24
OCT/NOV/DEC	20	25	21
JAN/FEB/MAR	20	46	23
APR/MAY/JUNE	20	18	1

GOALS AND ACTUAL NEW CLUBS CUMULATIVE



GOALS AND ACTUAL MEMBERS CUMULATIVE



DROPPED CLUBS: 0	18 CLUBS OF 26 ADDED 1 OR MORE NEW MEMBERS	GENDER DISTRIBUTION MALE 701 (66.57%) FEMALE 352 (33.43%)
DROPPED MEMBERS DECEASED 8 CLUB CANCELLED 0 OTHER 61 TOTAL 69	CLICK HERE FOR CUMULATIVE MEMBERSHIP DATA	TOTAL FAMILY UNIT MEMBERS 180 FAMILY MEMBERS PAYING HALF DUES 92